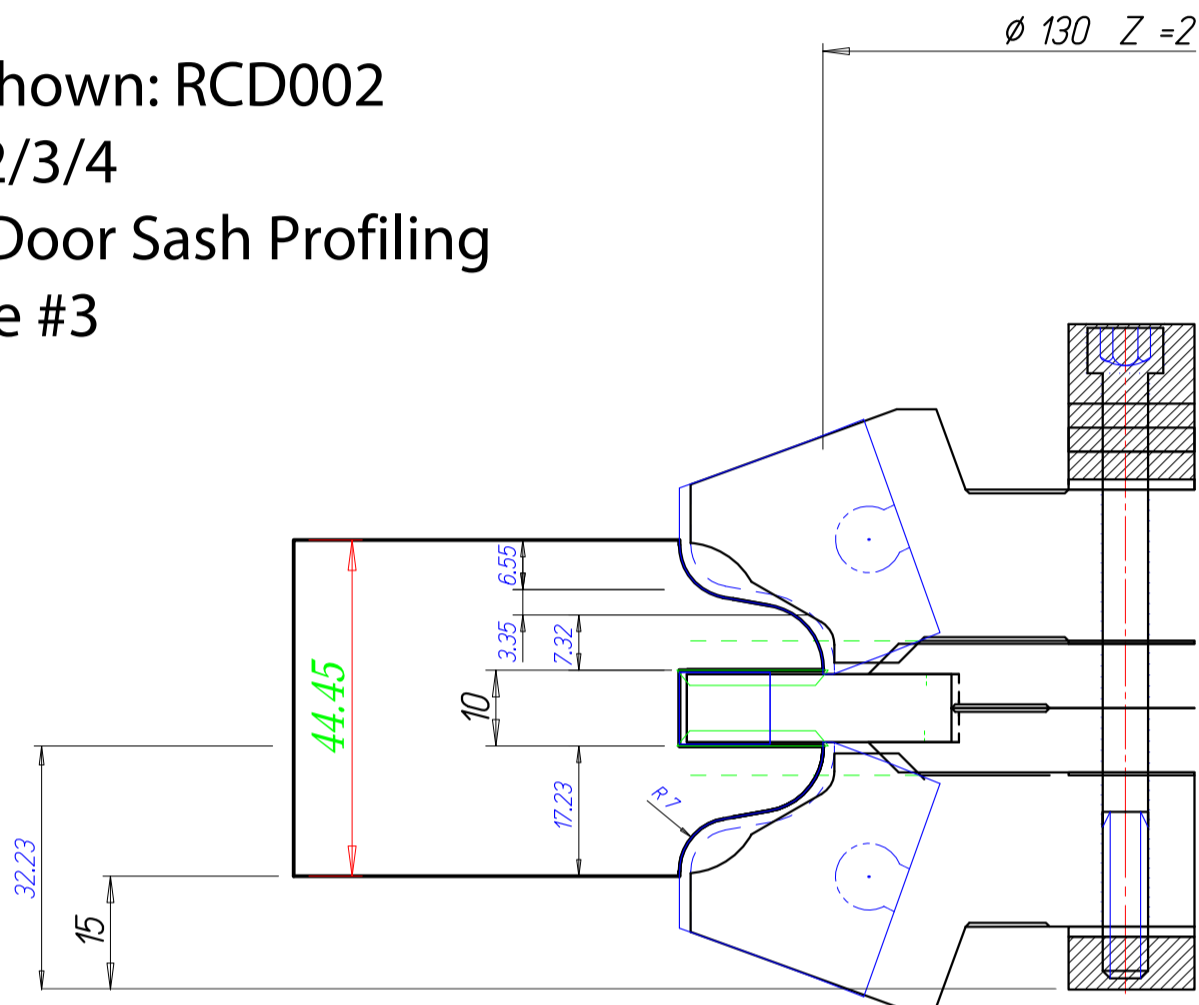


# Interior/Exterior Door Set

Example Shown: RCD002  
 Tools # 1/2/3/4  
 for 1-3/4" Door Sash Profiling  
 with Profile #3

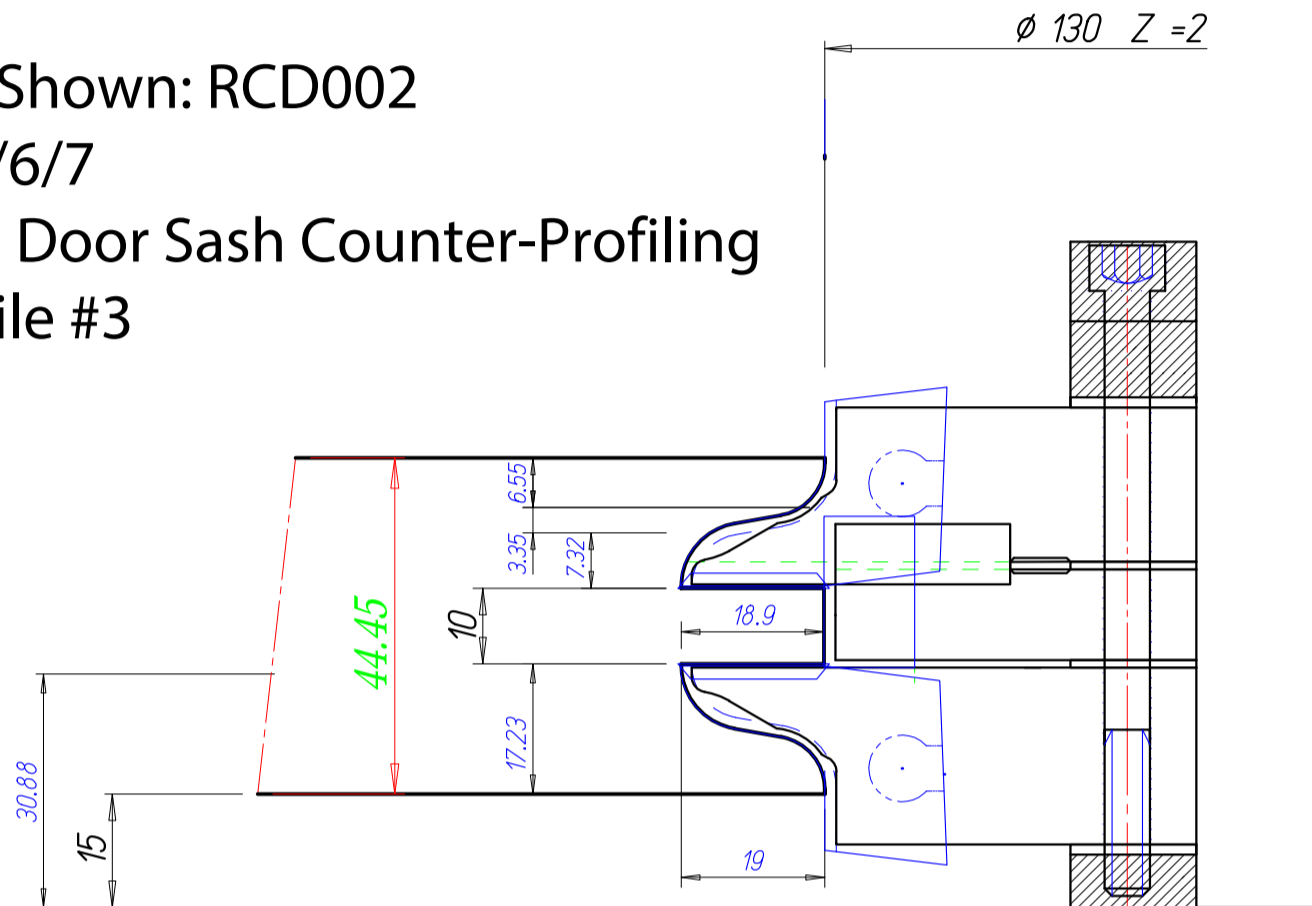


> Grow the Toolset per your needs:

- > RCD002 consists of tools #1/2/3/4/5/6/7 (Mortise & Tenon Joinery)
- > RCD004 consists of tools #4/8/7/9 (Glass Bead for Dowel/Biscuit Joinery)
- > RCD006 consists of tools #8/9 (Works with RCD002 for a complete set)
- > RCD008 consists of tools #1/2/3/4/5/6/7/8/9 (The complete set)

# Interior/Exterior Door Set

Example Shown: RCD002  
 Tools # 5/6/7  
 for 1-3/4" Door Sash Counter-Profiling  
 with Profile #3



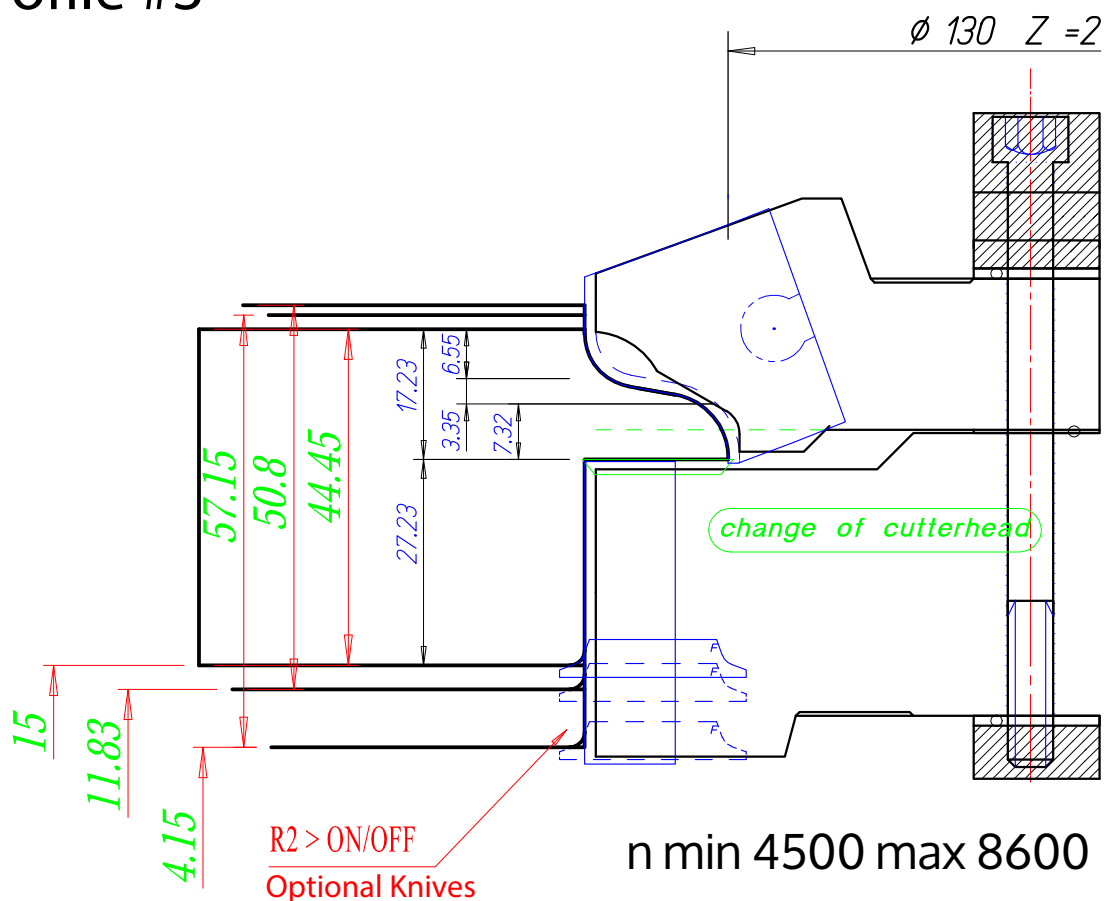
- > Grow the Toolset per your needs:
- > RCD002 consists of tools #1/2/3/4/5/6/7 (Mortise & Tenon Joinery)
- > RCD004 consists of tools #4/8/7/9 (Glass Bead for Dowel/Biscuit Joinery)
- > RCD006 consists of tools #8/9 (Works with RCD002 for a complete set)
- > RCD008 consists of tools #1/2/3/4/5/6/7/8/9 (The complete set)

## Interior/Exterior Door Set

Example Shown: RCD004 or RCD008

Tools # 4/8

for Door Sash Profiling with Rebate with Profile #3



> Grow the Toolset per your needs:

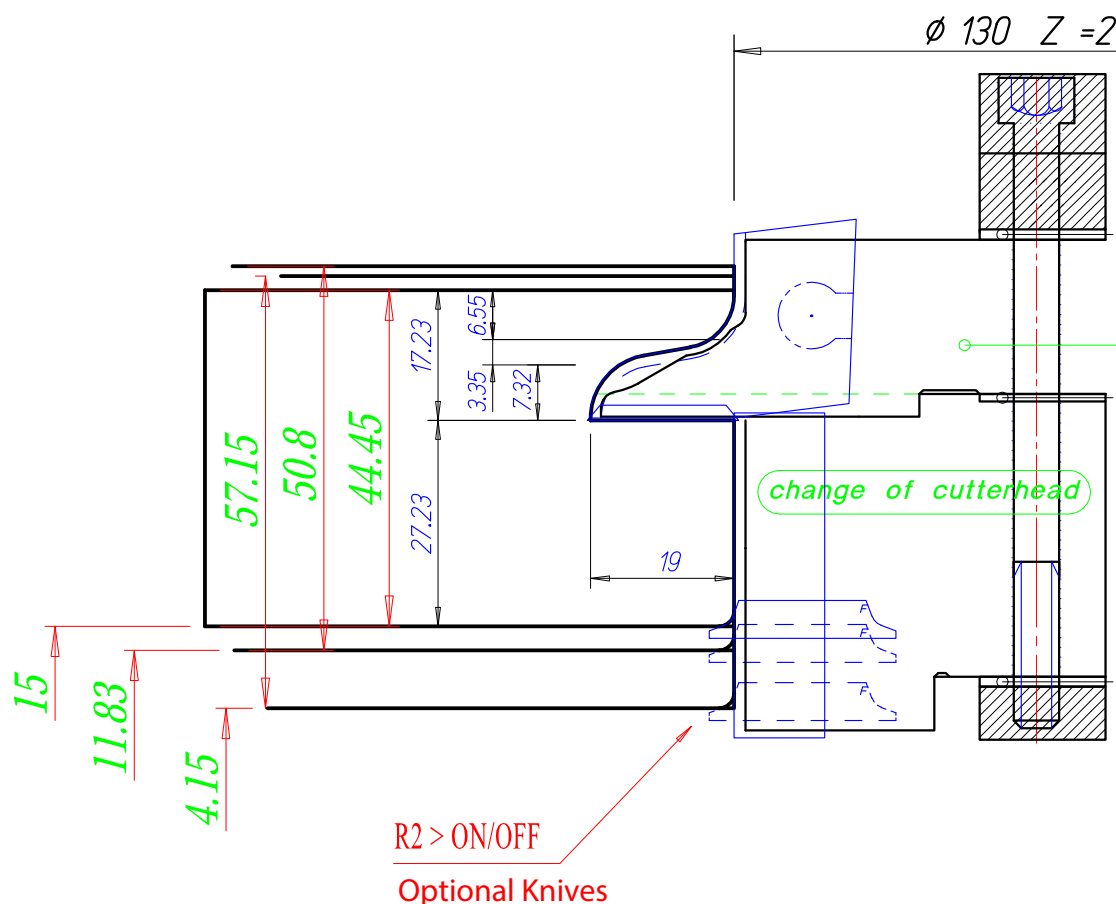
- > RCD002 consists of tools #1/2/3/4/5/6/7 (Mortise & Tenon Joinery)
- > RCD004 consists of tools #4/8/7/9 (Glass Bead for Dowel/Biscuit Joinery)
- > RCD006 consists of tools #8/9 (Works with RCD002 for a complete set)
- > RCD008 consists of tools #1/2/3/4/5/6/7/8/9 (The complete set)

## Interior/Exterior Door Set

Example Shown: RCD004 or RCD008

Tools # 7/9

for Door Sash Counter-Profiling with Rebate  
with Profile #3



> Grow the Toolset per your needs:

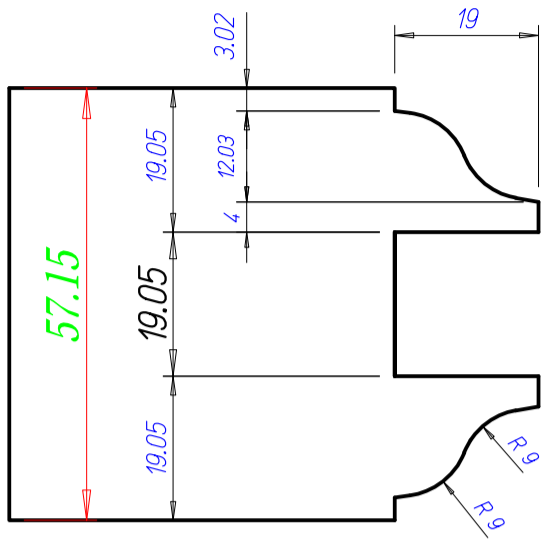
> RCD002 consists of tools #1/2/3/4/5/6/7 (Mortise & Tenon Joinery)

> RCD004 consists of tools #4/8/7/9 (Glass Bead for Dowel/Biscuit Joinery)

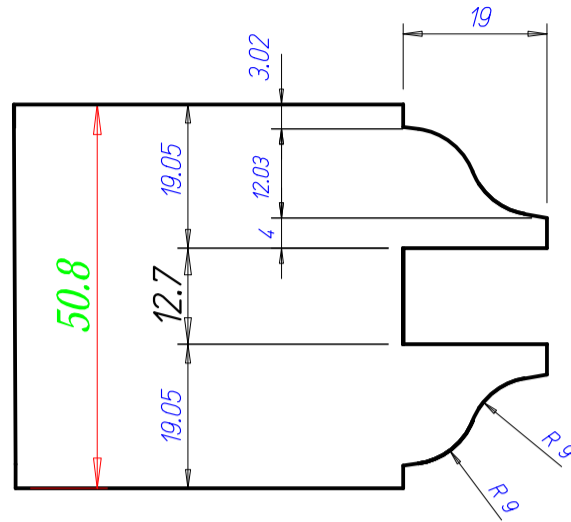
> RCD006 consists of tools #8/9 (Works with RCD002 for a complete set)

> RCD008 consists of tools #1/2/3/4/5/6/7/8/9 (The complete set)

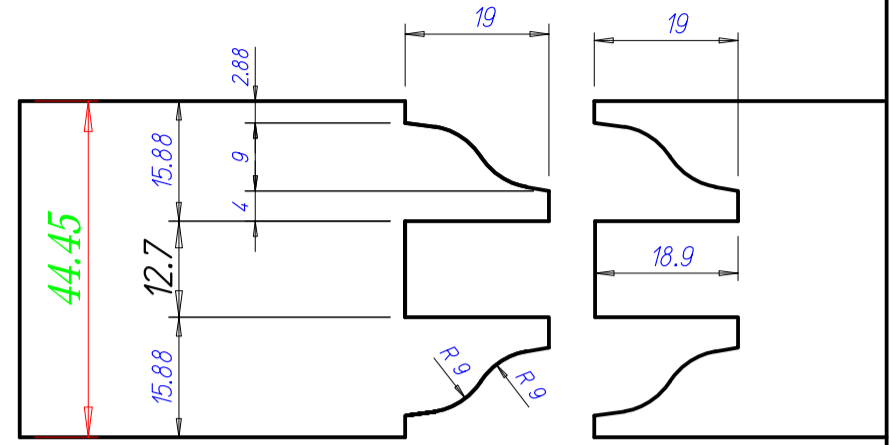
## Thickness 2 1/4"



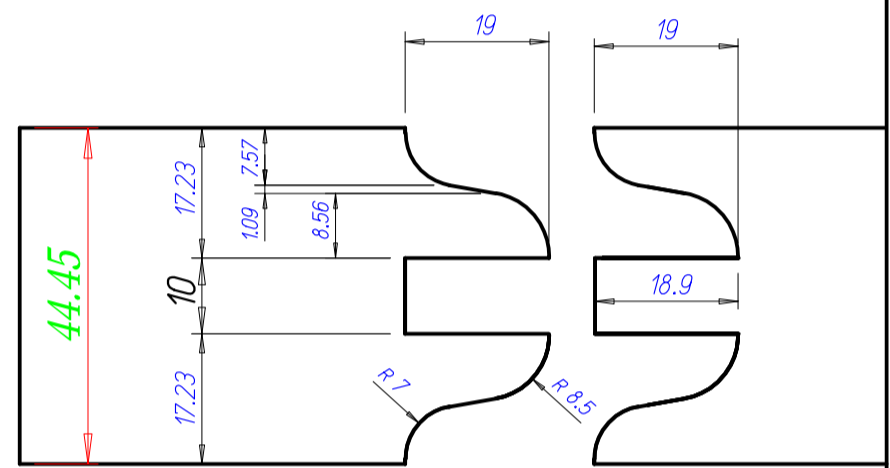
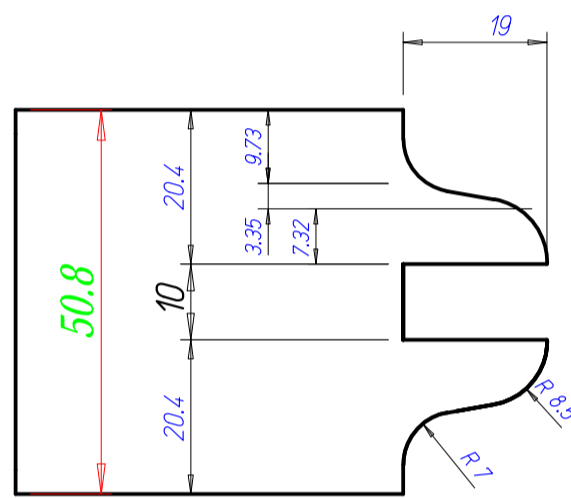
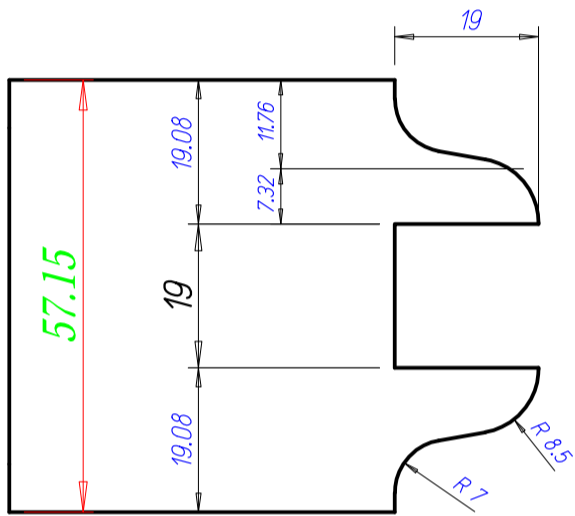
## Thickness 2"



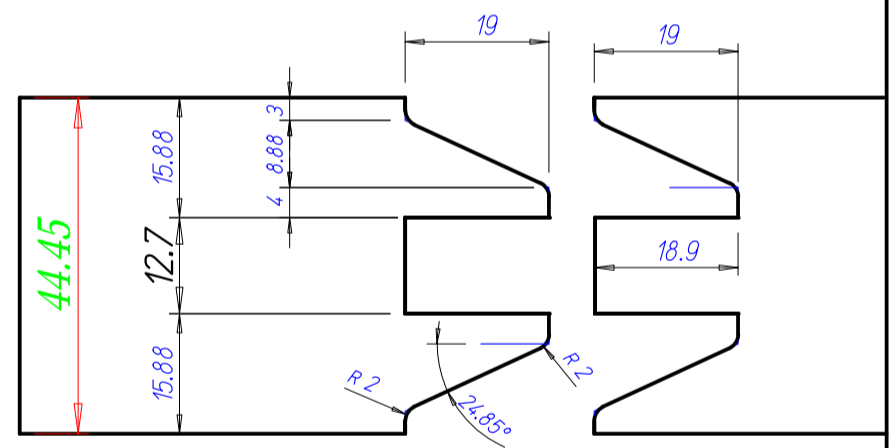
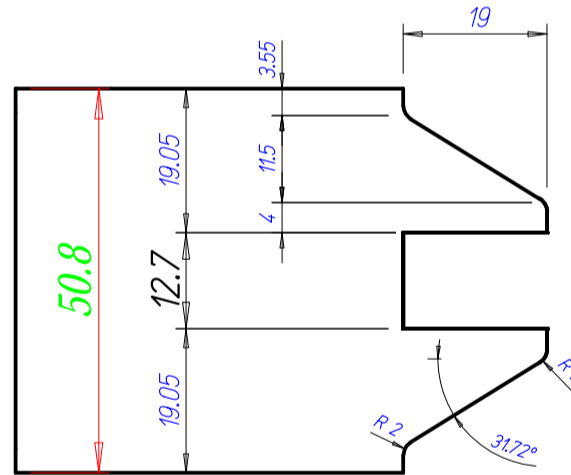
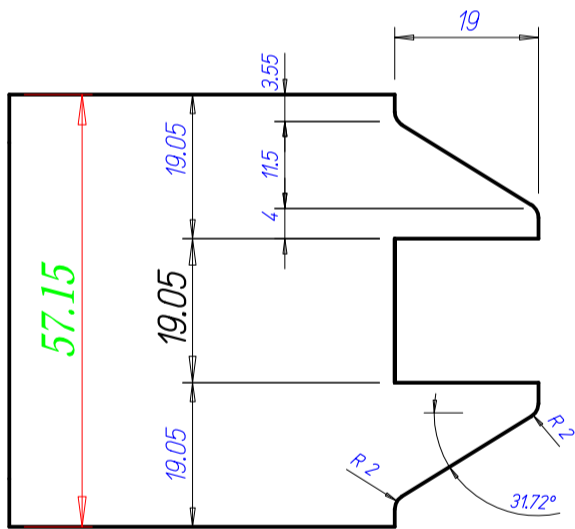
## Thickness 1 3/4"



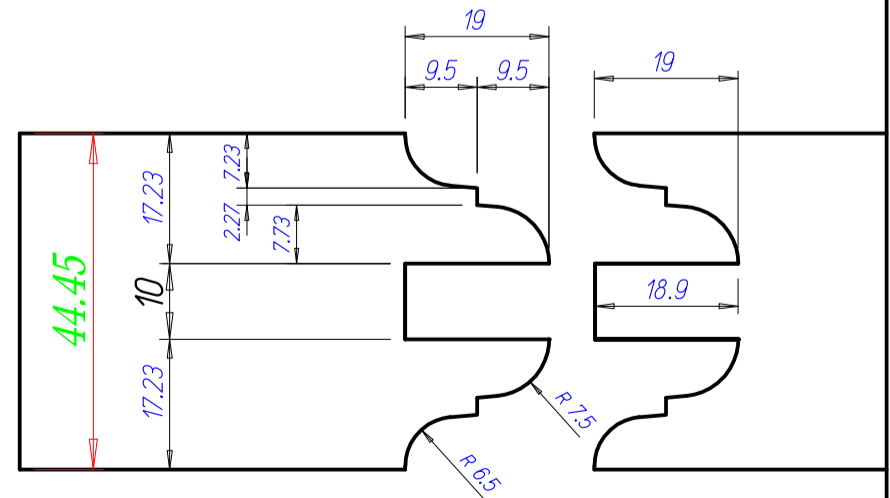
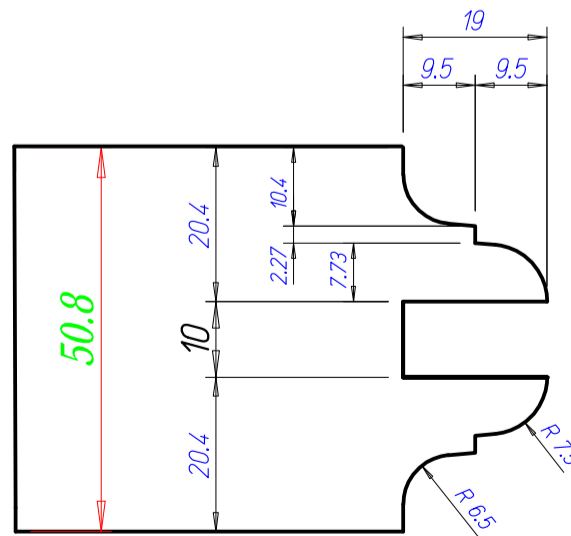
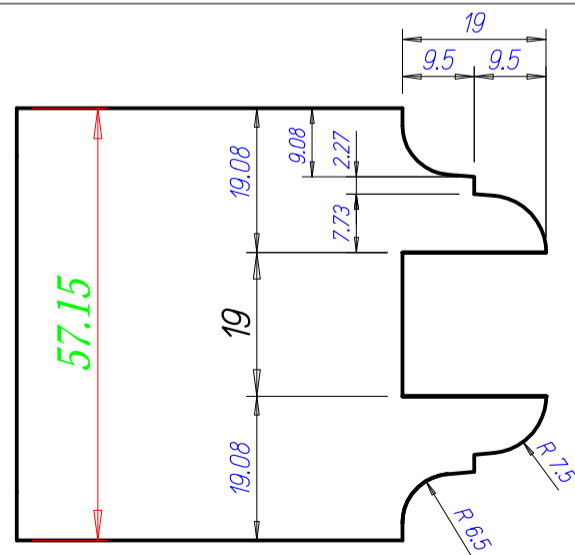
profile 4



profile 3



profile 2



profile 1